



INDOFINE Chemical Company, Inc.

121 Stryker Lane, Bldg. 30, Suite 1 • Hillsborough, NJ 08844 • U.S.A.

Phone: (908) 359-6778 • FAX: (908) 359-1179

website: www.indofinechemical.com

e-mail: chemical@indofinechemical.com

CERTIFICATE OF ANALYSIS

Catalog Number: 021126S

Product Name: **LUTEOLIN-7-O-GLUCOSIDE**
(Luteoloside)

CAS Number: [5373-11-5]

Lot Number: 2407963

Chemical Formula: C₂₁H₂₀O₁₁

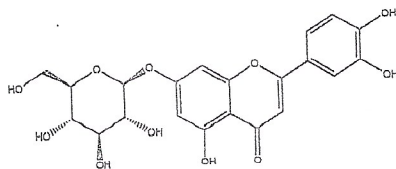
Molecular Weight: 448.38

Appearance: Yellow powder

Water Content: 1.2%

Storage: Store in a cool, dry place. Protect from light.

Purity(HPLC): 98.8%



Prepared by:
Ramesh Mandadi
Ramesh Mandadi
Director of Operations

Reviewed and Approved by:
Sujata Moton
Sujata Moton
VP



INDOFINE Chemical Company, Inc.

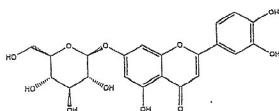
121 Stryker Lane, Bldg. 30, Suite 1 • Hillsborough, NJ 08844 • U.S.A.

Phone: (908) 359-6778 • FAX: (908) 359-1179

website: www.indofinechemical.com

e-mail: chemical@indofinechemical.com

HPLC ANALYSIS



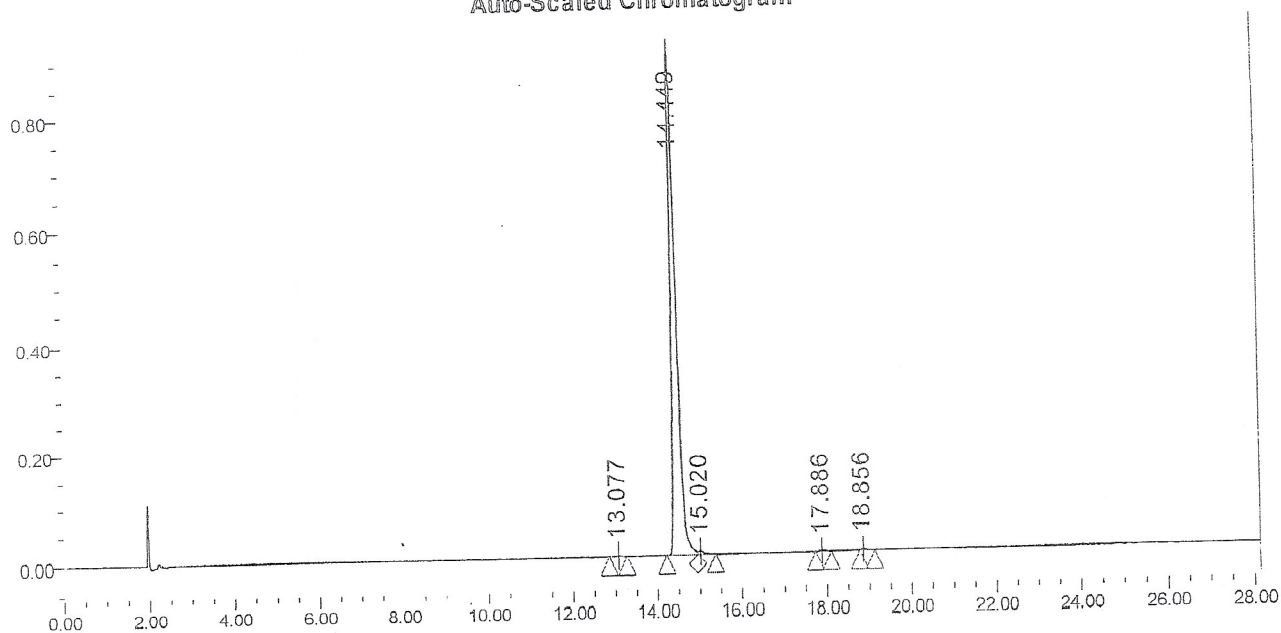
Catalog No.: 021126S
Product Name: Luteolin-7-O-glucoside
Lot No.: 2407963

SAMPLE INFORMATION

Sample Name: Luteoloside
Sample Type: Unknown
Vial: 58
Injection #: 1
Injection Volume: 10.00 ul
Run Time: 30.0 Minutes

Acquired By:
Sample Set Name
Acq. Method Set: Luteoloside
Processing Method: sample
Channel Name: PDA Ch1 340nm@4.8nm
Proc. Chnl. Descr.: PDA Ch1 340nm@4.8nm

Auto-Scaled Chromatogram



Peak Results

Name	RT	Area	% Area	Height (µV)	USP Plate Count	USP Resolution
1	13.077	9166	0.11	1230	66360.47	
2	14.449	7999409	98.82	901888	67732.08	6.40
3	15.020	56685	0.70	6031		
4	17.886	14788	0.18	1876	114052.23	
5	18.856	15049	0.19	3243	454948.98	5.86

Prepared by:
Ramesh Mandadi
Ramesh Mandadi
Director of Operations

Reviewed and Approved by:
Sujata Moton
Sujata Moton
VP